

# 2026 Critical Details on National Camping School Participation

## **Course Site:**

CAMP BUD SCHIELE  
(Cub Camp/Training Facility)  
668 BOY SCOUT RD.  
RUTHERFORDTON, NC 28139

**Course Director:** Wendy Henderson

**E-mail:** [dwhenderson2@hotmail.com](mailto:dwhenderson2@hotmail.com)

**Phone:** (828)243-4326

**Host Liaison:** Connie Bowes

**E-mail:** [connie.bowes@scouting.org](mailto:connie.bowes@scouting.org)

**Phone:** (704) 620-7798

**Dates:** April 11-12, 2026

**Theme:** Dinos!

## **Course times:**

The adventure begins at 8:00 a.m. on Saturday, April 11, and ends at approx. 2:00 p.m. on Sunday, April 12. Check-in at Smith Lodge.

## **Weather:**

Temperatures will be high in the 70s with lows in the 40s. Be prepared for cool mornings and warm afternoons, as well as some outdoor activities.

## **Early arrivals:**

For an additional fee of \$55.00\*, you may arrive the night before, please make it after 7:00 p.m. and before 10:00 p.m. *This fee covers lodging Friday evening and breakfast on Saturday. This fee does NOT cover a meal on Friday night. FYI: No activities are planned for early arrivals as the staff are busy with preparations.*

## **Before You Arrive at NCS:**

- Take the online NCS course Foundations of Cub Scout Day Camp (CS-62) and the in-person Council led NCS course (CS-63). Don't forget to complete the other pre-requisites: Youth Protection Training and Cub Scout Leader Position Specific training or the training for your specific position.
- Please utilize the [Scouting America pre-event medical screening form](#) and elect to stay home if you are ill, or you have been in close contact with someone who is ill.

## **What to Bring to Camp:**

- Proof of BSA registration & prerequisite online training courses (Youth Protection Training, Cub Scout Leader Position Specific Training or appropriate job specific training, Foundations of Cub Day Camp Online Training, and In-Council Day Camp Training).
- Your completed [Scouting America health form](#) (parts A and B).
- Samples of your council's day camp promotional materials, staff manuals, or other camp literature, registration forms, schedules, etc., for display or giveaway. Make copies for at least 20 participants (no copying services are available at camp).
- Interesting crafts or activity ideas to share.
- Your camp T-shirt—there will be an opportunity for everyone to wear theirs.
- Notepad and pencil or pen. A participant binder and learning materials will be provided.
- NCS Online Trading Post: You can preview and purchase specialty National Camp School items (shirts, sweatshirts, and more!) to be sent directly to your home via [Scouting America National Supply](#).

### **Personal Gear:**

- Official complete BSA uniform. We will wear the Field uniform, the official Scout uniform, on Saturday morning and Sunday morning. You may wear any Day Camp T-shirt/Sweatshirt or Scout activity uniform, at other times.
- Pillow, Bed Linens (or sleeping bag), toiletries, towel, washcloth, soap, shampoo, etc. (Most beds are twins with some exceptions to queen.)
- Warm sleepwear – you will be in heated rooms.
- Coat, jacket, suitable footwear/socks, gloves, hat, umbrella
- Camera (Take photos of the displays and show others back home what can be done!)
- Cell phone coverage at this site is spotty (camp phones restricted to emergencies).

### **What to Expect and What Is Expected:**

- Arrive rested. Be prepared for concentration, participation, and fun! Days last from early morning to late at night.
- Be prepared for Dorm style - indoor housing with mattresses. Please bring your own bedding.
- **You must arrive no later than 8:00 a.m. on the first day and attend all sessions through the last day to be certified.**
- To focus on learning, please leave the distractions of life behind: family, children, pets, job, etc. There are no accommodations for anyone but registered participants.
- Please understand that if you receive the names and contact information for other participants or for staff, you may not contact them for commercial purposes unless you receive their expressed permission to do so.

As a member of your council's day camp leadership team, you will be providing Scouts with an experience that they will remember the rest of their lives. Thank you for making the decision to attend National Camping School.

Yours in Scouting,

*Wendy Henderson*

NCS Course Director

*\*The early arrival fee is handled through your local council. You may or may not be expected to cover it personally.*



Camp Entrance



Belk Lodge-For Men

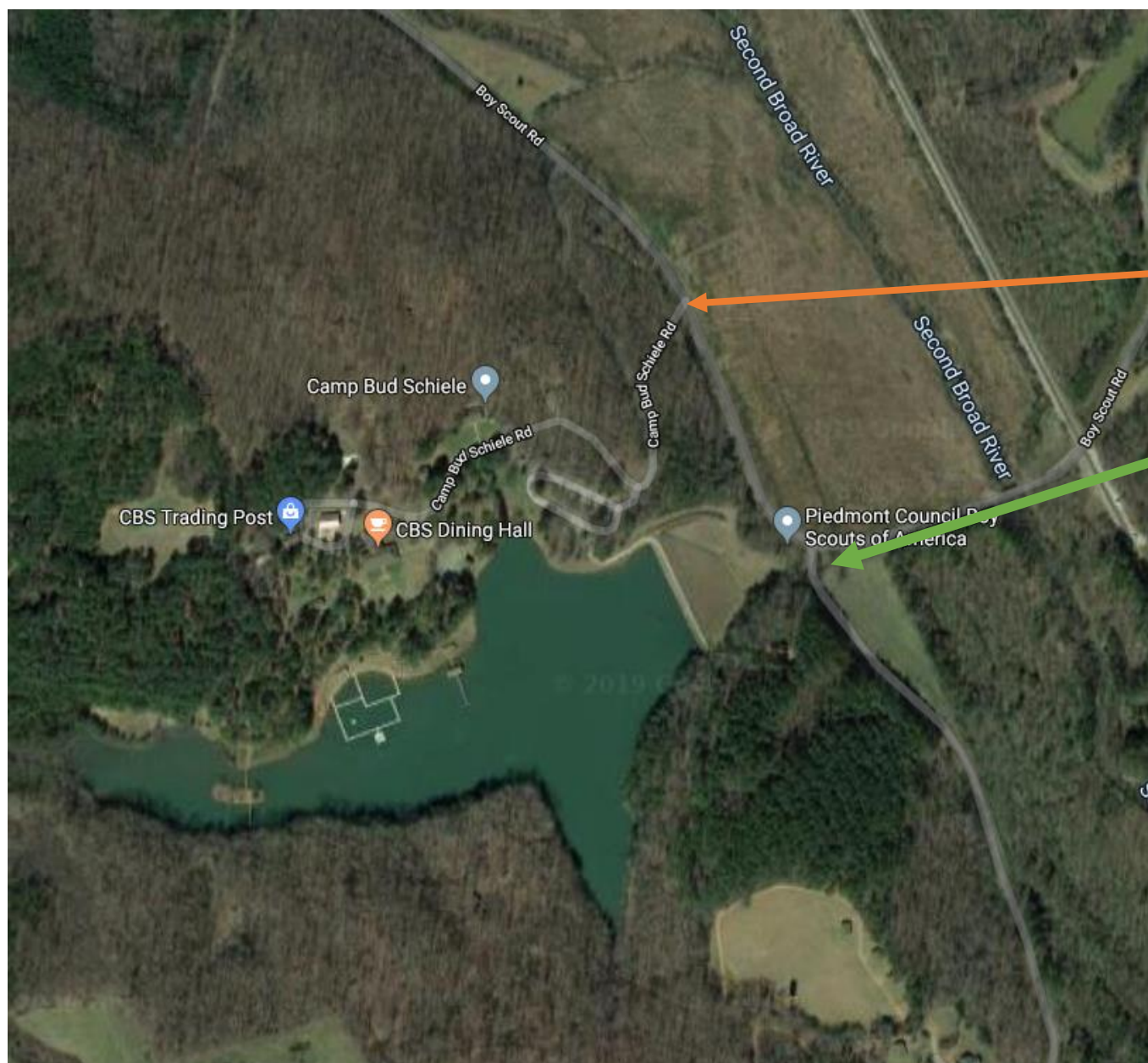


Family Cabins for Women



Smith Training Lodge

**Location: 35.451134 – 81.9211543**



668 Boy Scout Rd.  
Rutherfordton, NC  
Brings you Here

Look for this sign and turn on  
Gravel Road to Cub World

