



BOY SCOUTS OF AMERICA®
NATIONAL COUNCIL



Summit Bechtel Reserve
2550 Jack Furst Drive
Glen Jean, WV 25846

Dear NCS Participant,

We are excited to welcome you to the John D. Tickle National Training and Leadership Center at The Summit Bechtel Reserve in West Virginia for National Camping School. Our course is scheduled for April 27-May 3, 2024.

You could not have picked a better location to attend your National Camping School (NCS) experience in the heart of the Appalachian Mountains. With the combined force of our distinguished staff and exceptional facilities, we strive to make your stay at SBR a time to remember.

National Camping School and hosts will continue to practice any locally required COVID-19 mitigation strategies. However, these precautions cannot eliminate the potential for exposure while at camp. Information from the Centers for Disease Control and Prevention (CDC) states that older adults and people of any age who have serious underlying medical conditions are at higher risk for severe illness from COVID-19. If you are in this group, please ensure you have approval from your health care provider prior to attending National Camping School. Please find SBR most recent covid updates on our website: www.summitbsa.org/covid-19/

Below we strive to answer any questions you may have before you arrive on site. To learn more about The Summit and all our fun and exciting programs, please be sure to visit our website (www.summitbsa.org). If you have any remaining concerns or questions about our facilities or NCS at the Summit, please contact the SBR Liaison for NCS.

Braxton Rhodes: Braxton.Rhodes@scouting.org.

At the Summit, we aim to meet and exceed your expectations with sights to see, friends to make, things to learn, and adventures all around. We look forward to showing you what we're all about and welcoming you to The Summit family.

See you soon!

Arrival, Registration, and Departure

Early Arrival

Students are welcome to arrive 1 day early from their normally set program time. An early arrival fee will apply. Early arrivals will only include the dinner of that day and the breakfast of the next day. The dining hall closes at 6:30pm. Please proceed to the Pigott Dining Hall for check in and lodging assignment. Directions and a map will be provided at the North Gate.

Onsite Registration

Registration is from 9:00 a.m. to 11:00 a.m. on Saturday, April 27, and will take place at the **Pigott Dining Hall**. Directions and a map will be given to you when you arrive at our North Gate. The course begins at Noon. Please plan to arrive no later than 11:00 a.m. so that you can complete the registration process.

North Gate Directions

The below address is recommended for GPS. Go past the post office and cross the train tracks.

Glen Jean Post Office
102 Co Rte 25/9
Glen Jean
WV – 25846

Summit Waiver & Annual Health Medical Record

Please complete the Summit Waiver and bring with you to registration. Copies of the waiver will be provided.

An annual medical examination and health record, completed within the past 12 months, is required and must be completed prior to your arrival. Please bring the completed form. If you do not have the proper medical examination, you are not allowed to attend NCS or stay onsite until you obtain one at your own expense. The cost will likely be a minimum of \$100.

Required Prerequisites

Shooting Sports, Aquatics, COPE, Climbing, Camp Director and Program Director - Please note that there are pre-requisite trainings which you **MUST** have before you attend your sections of NCS. Please ensure you have these trainings and bring support materials with you as proof. Persons who attend without these trainings complete will be sent back to their home councils.

- **Shooting Sports:** NRA Rifle and Shotgun Instructor Certification
- **COPE:** COPE Level I Instructor
- **Climbing:** Climbing Level I Instructor
- **Resident Camp Director and Program Director:** Online NCAP training and Unlawful Harassment Prevention training are available on the NCS page @ <https://www.scouting.org/outdoor-programs/national-camping-school/>

Departure

Please plan to depart after breakfast on the last day of school. All participants who are enrolled in a retraining section will be able to depart after Noon on the fourth day. Airport shuttle service users will be informed no later than Thursday afternoon of the shuttle departure time(s).

Airports

The Summit recommends participants to fly to Charleston, West Virginia's Yeager Airport (CRW). For those using SBR shuttles, your shuttle driver will be wearing a Summit identification badge and shirt. Please use the below link to purchase your shuttle ticket:

<https://www.eventbrite.com/e/shuttle-tickets-for-summit-bechtel-reserve-2023-tickets-464595968047>

Personal Vehicles

Participants driving personal vehicles who plan to keep an automobile on the property, please park only in designated areas. Vehicles should not be used for transportation around SBR unless directed by SBR.

Course start dates by section:

Camp Director (Full Course) - April 27
Program Director (Full Course) - April 27
COPE Director (Full Course) - April 27
COPE Director (Recertification Only) - April 27
Climbing Director (Full Course) - April 27
Climbing Director (Recertification Only) - April 27
Shooting Sports Director (Full Course) - April 27
Shooting Sports Director (Recertification Only) - April 30
CCPT (Full Course) - April 30
Trek Director (Full Course) - April 27

GENERAL INFORMATION

Summit Operations Center (SOC)

Emergency 24-hour SBR Hotline

(304) 465-2900

Housing

Each participant will be housed in dormitory rooms. Linens, blankets, and pillow are provided. Please plan for various types of inclement weather as you will spend much of your time outdoors. Showers are available in the dorms. Please bring your own toiletries. Free Wi-fi is provided. However, your experience will be enhanced if you limit distractions and put away electronics during your training and activities.

Food and Dining

Breakfast, lunch, and dinner are provided by and included every day, starting with lunch on your arrival day and concluding with breakfast on your departure day. SBR has the capability to meet some dietary restrictions if needed. Please contact the liaison at least two weeks in advance if you have a dietary need. Please note that while SBR attempts to provide food that addresses the most common issues (nut allergies, etc.), we cannot address all dietary restrictions. If we are unable to meet your needs, please bring your own food to meet your needs.

Uniform

The complete Boy Scouts of America or Venturing field uniform is required at all National Camping Schools. The BSA Field Uniform (Scout shorts or long trousers, Scout shirts, Venturing shirts, Scout socks) or the BSA Activity Uniform (Scout shorts or pants with Scouting golf or t-shirts) will be worn at camping school. Complete Field Uniforms are required for evening meals, worship services, campfires, and formal activities.

Family Adventure Camp

Bring your family with you during your time with us! Make this a memory not just for you, but for them too. We offer vacation experiences for everyone so that you can work and play at the same time! Discounts apply to NCS students. Find out more with our website or contact the liaison for more details.

familyadventutrewv.com

Trading Post for NCS items

National Supply will not have a trading post at National Camping School this year. If you are interested in purchasing National Camping School items you can download the flier at <https://www.scouting.org/outdoor-programs/national-camping-school/> and have them sent directly to your home. Please see your confirmation email for the email address to receive FREE SHIPPING on your order.

Summit Trading Post & Branding

The Summit will have designated times for which students can visit the trading post. The Summit will also provide a hot iron branding session during this period.

Quiet Hours (11pm-6am)

Quiet hours are from 11pm-6am. If you become aware of a disruptive guest, please contact a member of staff immediately. Or contact the SOC (304-365-2900). Televisions, voices, or other devices must be always kept at a respectful low level. Please follow "Leave No Trace".

Lost & Found Policy:

The Summit Bechtel Reserve assumes no liability for misplaced, stolen, or damaged valuables or belongings. If you discover that you have left behind something of value to you, please call us immediately (304) 465-2800 and we will assist you. Lost & found items are held for fourteen (14) days while we attempt to contact the guest. If we are unable to contact the listed information in that time frame, the unclaimed item(s) are thrown away, donated, or disposed of accordingly.

Returning Items

We will happily return your lost item(s) to you by United States Postal Service. Your reservation will be charged packaging and postage, plus a \$10.00 handling fee. The Summit Bechtel Reserve is not responsible for any item lost or misdirected during shipment by the United States Postal Service.

Park At Own Risk

Park in designated areas. All vehicles are parked at the risk of the owner. The Summit Bechtel Reserve shall not assume liability or responsibility for any vehicle, occupants, or contents while operated or parked on property.

Damages Or Tampering with Detection Systems/ Equipment:

The Summit Bechtel Reserve holds the right to take actions towards any guest or visitor found to have tampered or interfered with any detection equipment in lodging and/or structures, including detector heads in public areas, break glass points and fire extinguishers. Guests or visitors found to have tampered with any fire detection or fire-fighting equipment will be charged with any costs incurred by the property and will be evicted from the site. Depending on the severity of the guest actions, law enforcement may become involved at the Summit's discretion. Should the fact that firefighting or detection equipment had been tampered with come to light after the guest has departed, we reserve the right, and you hereby authorize us to charge your credit or debit according to our damage policies.

Damages and/or Theft of Property

You are liable for any damage howsoever caused (whether by the deliberate, negligent, or reckless act) to your lodgings or property caused by you or any person in your party whether or not staying at The Summit Bechtel Reserve. We reserve the right to retain your credit card and/or debit card details as presented on your reservation and charge or debit the credit /debit card such amounts as it shall in its sole discretion deem necessary to compensate or make good the cost or expenses incurred or suffered because of the aforesaid. Should this damage come to light after the guest has departed, we reserve the right and you hereby authorize us to charge your credit or debit card for any damage incurred to your lodging or property, including but not limited to property damage, missing or damaged items, smoking fee, cleaning fee, etc. We will make every effort to rectify any damage internally prior to contracting a specialist to make the repairs, and therefore will make every effort to keep any costs that the guest would incur to a minimum.

Damages and/or Removals to Lodging, Furnishings, Fixtures, Equipment, Linens, and Alike

Damages or removals to lodgings, fixtures, furnishings, equipment, electronic equipment, towels, linens, blankets, and the like will incur a fee of 125% of full and new replacement value. Any damages to property, whether accidental or willful, is the responsibility of the registered guest for each lodging. Any costs associated with repairs and/or replacement will be charged to the credit card of the registered guest.

Lightning Advisory

- Lightning advisories are announced when lightning is detected within **12 miles** of The Summit.
- **All Aquatics and Aerial Sports activities are suspended:** All staff and participants exit the water or descend from their aerial sports activity and move to a safe location.
- **Consol Energy Bridge:** The wingtip walkways are CLOSED. The main wooden walkway is open.

Lightning Alert

- Lightning alerts are announced when lightning is detected within **8 miles** of The Summit.
- **All outdoor activities suspended.** All staff and participants must move to a safe location.
- The entire Consol Energy Bridge is closed under a lightning alert.

Wait until **ALL CLEAR** is announced before resuming activity.



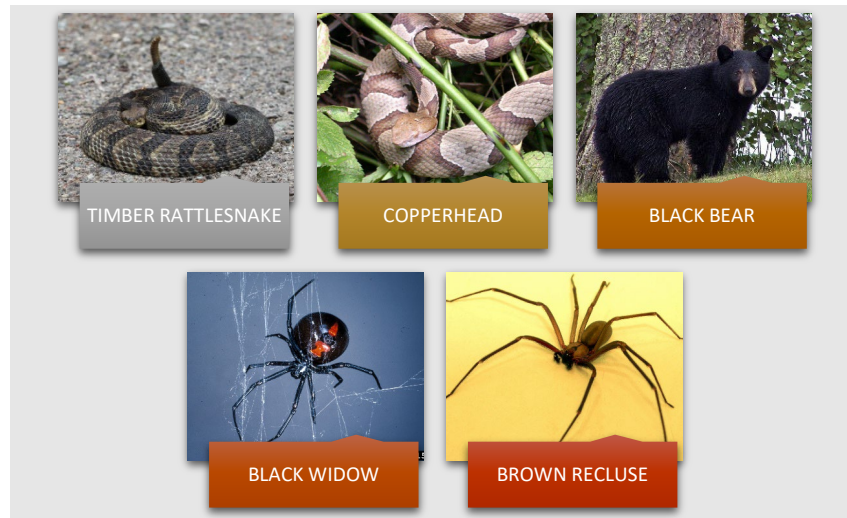
Emergency Locations

We continually monitor the weather and will announce hazardous weather over our camp wide PA system. Please follow staff instructions in case of hazardous weather. If the severity of the storm warrants, SOC will coordinate movement of all personnel to more secure locations. Transportation services will be utilized in extended periods of severe weather. If an emergency weather alert is announced, please seek appropriate weather shelters.

- Any permanent structure with supported roofing
- Shower houses
- Emergency Procedure Shelters
- Note: Unless directed by staff, the main living area of Luxury Deluxe Tents satisfy weather shelters.

Wildlife Hazards

We respect and reduce the risk of animal encounters by making ourselves and our base less approachable to them. Contact the SOC if wildlife encroaches in your campsites or if they pose a threat to you or others. The following wildlife are dangerous and should **ALWAYS BE AVOIDED**. Reduce the risk of encounters by staying on designated trails and **NEVER** approach. Please pay special attention to learn how to identify them.



Snakes: Unless completely known, treat all snakes as venomous. Avoid tall grassy areas and be careful lifting items that have stayed in place for a long time. If bitten, have victim lay prone, cool body, and rest quietly to reduce the spread of venom. Keep the bite area on the same level as the heart. If possible, attempt to identify the type of snake.

Bears: Upon encounter, attempt to leave area. Never get in between mothers and cubs. If the bear approaches, make loud noises and group up together waving your arms to scare the bear off. If the bear charges, it may be necessary to fight back to avoid serious injury. Running from a black bear will likely increase its instinct to attack you. All bear sightings that pose a threat are reported immediately to the Summit Operations Center and all personnel removed from the immediate area of the sighting.

Spiders: Most spider bites are not felt at the time the bite happens. If suspect a bite, immediately draw a circle around the swollen or red area. Seek medical attention. Try to identify spider. Continue to draw a circle around area every 30 minutes to track progression (if any)

Rabies Carrying Animals: Raccoons and other commonly observed small animals are known to carry rabies. Try to flee the area as rabies infected animals will likely not be deterred by fighting back. If bit, reduce heart rate as much as possible, cool yourself to prevent shock, seek medical attention immediately.

Communication

Contact Us:

Mailing Address

Your Name -- NCS
Summit Bechtel Reserve
2550 Jack Furst Drive
Glen Jean, WV 25846

Main Phone Number

(304) 465-2800

Website

www.SummitBSA.org



Stay Connected

The Summit has very strong cell phone coverage in most areas of the property. You should be able to receive and respond to most calls on a timely basis.

Wi-Fi service will be available in certain locations within the crew living area as well as certain locations within The Scott Summit Center. Keeping up with your e-mails should be relatively easy, if that is your desire.



Packing List

Sleeping (Bunkhouse / dorm style)

SBR provides linens, blankets, and pillow.

- ☐ Sleeping bag (if desired)
- ☐ Sleeping pillow (if desired)
- ☐ Sleeping clothes

Clothing

- ☐ Hiking boots or study shoes for light hiking
- ☐ Camp shoes (close toed)
- ☐ 2 pair heavy hiking socks
- ☐ 6 pairs underwear.
- ☐ 2 pairs Official BSA Scout Pants or Shorts
- ☐ 2 pairs Official BSA Scout Socks
- ☐ 1 Official BSA Field Uniform
- ☐ 2 BSA Activity Shirts
- ☐ 1 sweater or jacket
- ☐ 1 stocking cap
- ☐ 1 rain jacket
- ☐ 1 pair of rain pants

Eating and Personal

- ☐ Water bottles
- ☐ Flashlight (with extra batteries)
- ☐ Bandana or neckerchief
- ☐ Chap Stick
- ☐ Bath towel
- ☐ Washcloth
- ☐ Sunscreen
- ☐ Toothbrush / toothpaste
- ☐ Required medications (sealed in waterproof bags)
- ☐ Watch
- ☐ Personal first aid kit

Optional

- ☐ Sunglasses
- ☐ Camera
- ☐ Money for trading post
- ☐ Items to be branded
- ☐ Insect repellent (non-aerosol)
- ☐ Hiking or trekking poles

