

# 2024 Critical Details on National Camping School Participation

## **Course Site:**

New England Base Camp  
411 Unquity Rd  
Woburn, MA 01801

**Course Director:** Angela Rzeszut

**E-mail:** Angela.Rzeszut@scouting.org

**Phone:** (978) 505-5334

**Host Liaison:** Darrin Johnson

**E-mail:** Darrin.Johnson@scouting.org

**Phone:** (817) 480-9237

**Dates:** April 20-21, 2024

**Theme:** Outdoor Adventure!

## **Course times:**

The adventure begins at 8:00 a.m. on Saturday, April 20 and ends approx. 2:00 p.m. on Sunday, April 21.

## **Weather:**

Temperatures will be high in the 50s with lows in the 40s. Be prepared for cool days, as well as some outdoor activities.

## **Early arrivals:**

For an additional fee of \$55.00\*, you may arrive the night before, please make it after 7:00 p.m. and before 10:00 p.m. *This fee covers lodging Friday evening and breakfast on Saturday. This fee does NOT cover a meal on Friday night. FYI: No activities are planned for early arrivals as the staff are busy with preparations.*

## **Before You Arrive at NCS:**

- Take the online NCS course Foundations of Cub Scout Day Camp (CS-62) and the in-person Council led NCS course (CS-63). Don't forget to complete the other pre-requisites: Youth Protection Training and Cub Scout Leader Position Specifics training.
- Please utilize the [BSA pre-event medical screening form](#) and elect to stay home if you are ill, or you have been in close contact with someone who is ill.

## **What to Bring to Camp:**

- Proof of BSA registration & prerequisite online training courses (Youth Protection Training, Cub Scout Leader Position Specific Training, Foundations of Cub Day Camp Online Training, and In-Council Day Camp Training).
- Your completed [BSA health form](#) (parts A and B).
- Samples of your council's day camp promotional materials, staff manuals, or other camp literature, registration forms, schedules, etc., for display or giveaway. Make copies for at least 20 participants (no copying services are available at camp).
- Interesting crafts or activity ideas to share.
- Your camp T-shirt—there will be an opportunity for everyone to wear theirs.
- Notepad and pencil or pen. A participant binder and learning materials will be provided.
- NCS Online Trading Post: You can preview and purchase specialty National Camp School items (shirts, sweatshirts, and more!) to be sent directly to your home via [BSA National Supply](#).

### **Personal Gear:**

- Official complete BSA uniform. We will wear the Field uniform, the official Scout uniform, on Saturday morning and Sunday morning. You may wear any Day Camp T-shirt/Sweatshirt or Scout activity uniform, at other times.
- Pillow, Bed Linens, Toiletries, towel, washcloth, soap, shampoo, etc.
- Warm sleepwear, perhaps “long johns” or sweats.
- Coat, jacket, suitable footwear/socks, gloves, hat, umbrella
- Camera (Take photos of the displays and show others back home what can be done!)
- Cell phone coverage at this site is spotty (camp phones restricted to emergencies)

### **What to Expect and What Is Expected:**

- Arrive rested. Be prepared for concentration, participation, and fun! Days last from early morning to late at night.
- Be prepared for Dorm style - indoor housing with cots. Please bring your own bedding.
- **You must arrive no later than 8:00 a.m. on the first day and attend all sessions through the last day to be certified.**
- To focus on the learning, please leave the distractions of life behind: family, children, pets, job, etc. There are no accommodations for anyone but registered participants.
- Please understand that if you receive the names and contact information for other participants or for staff, you may not contact them for commercial purposes unless you receive their expressed permission to do so.

As a member of your council’s day camp leadership team, you will be providing Scouts with an experience that they will remember the rest of their lives. Thank you for making the decision to attend National Camping School.

Yours in Scouting,

Angela Rzeszut  
NCS Course Director

*\*The early arrival fee is handled through your local council. You may or may not be expected to cover it personally.*



## Address/Hours

### Address

New England Base Camp  
411 Unquity Road  
Milton, MA 02186

**Outdoor Complex and Specialty Programs:** Saturday 9:30 AM – 5:00 PM

### Office Hours

Office is located at 2 Tower Office Park, Woburn, MA  
Pool Membership Programs: M – F 6:00 AM – 9:00 PM  
**Phone:** 617-615-0004 | **Fax:** 617-615-0005

**Email:** NEBC@scouting.org



## Welcome

Base Camp is New England's premier outdoor adventure park, minutes from Boston!

Our main location in the beautiful Blue Hills Reservation in Milton, MA, offers your family, school group, scout troop or corporate team exciting and challenging activities that you can't get anywhere else.

### Egan Center

**The Egan Center will be the first thing that you notice when you pull into the parking lot. Come inside and the front desk will be ready to assist you** with everything from booking your New England Base Camp adventures to helping you register in Scouting. Work your way over to the Program Office for all your program needs, such as the daily program schedule, suggestions on what to do in Boston or hiking suggestions within the Blue Hills.

## **Overnight Facilities**

We offer a variety of options for your overnight stay. Our cabins come in different sizes and shapes, our smallest holding up to 8 and our biggest holding 24. Each cabin has a picnic table and campfire to use. Also, BBQ grills are located by each cabin.

Our Adirondacks shelters can hold up to 17 people and are a great way to stay over without having to put up a tent. We have sites that include single and multiple shelters so that we can serve a variety of families and units. Each Adirondack has the ability to place one tent around it. Each Adirondack have the ability to place one tent around it.

Each of our 13 campsites can hold up to 20 people. If you are planning on having more than 20 people in the campsite, please book additional campsites.

## **Hayden Lodge- Meals**

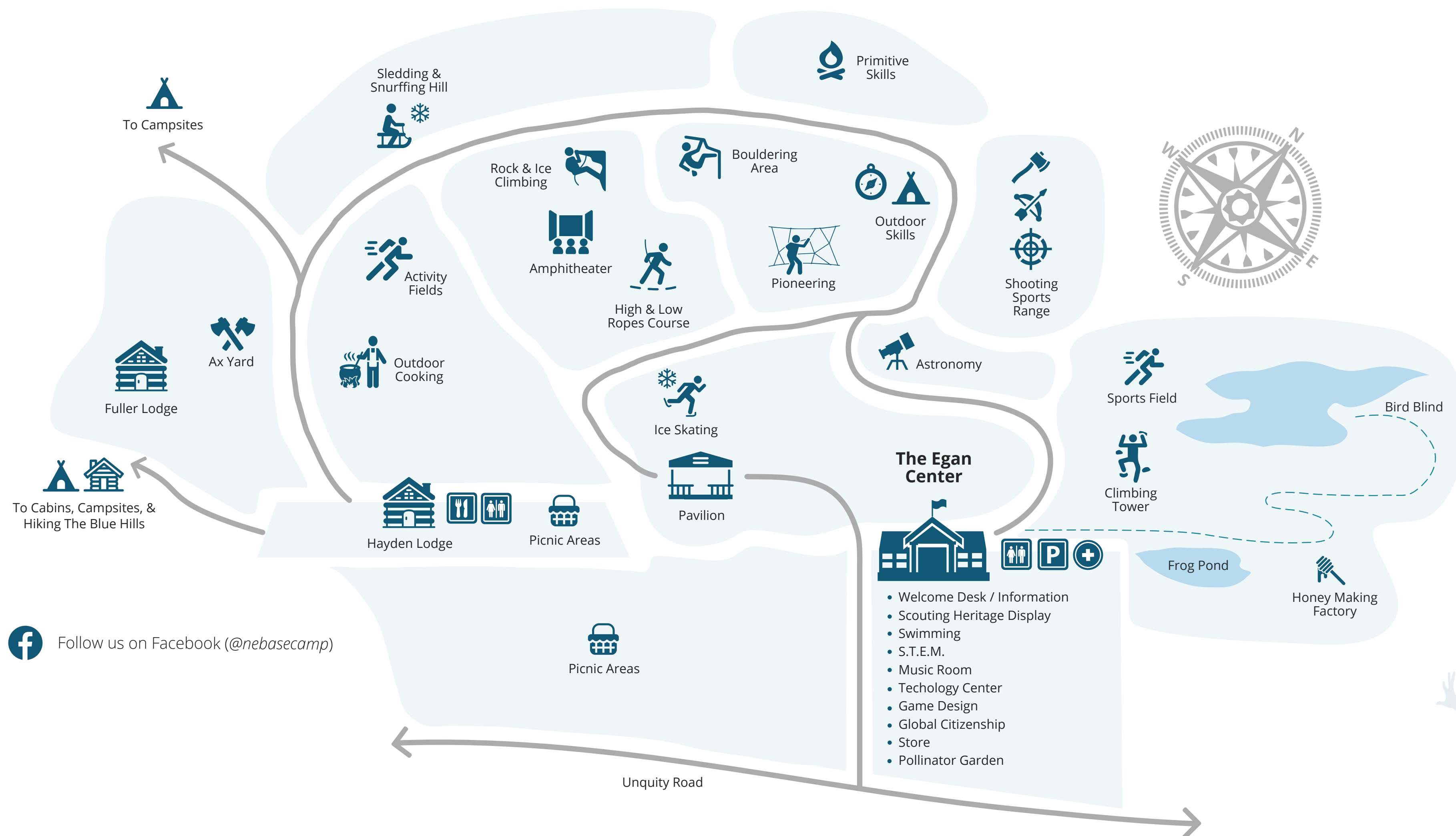
You do not want to miss any program time, so be sure to book your meals with New England Base Camp. We offer breakfast, lunch and dinner and can handle most dietary requests.

## **Directions from I-93**

1. Take I-93 to exit 3 Houghton Pound / Ponkapog.
2. At the top of the road turn right onto Blue Hill Road.
3. Follow Blue Hill Road to the end and turn right onto Hillside Street.
4. Follow straight until you pass the State Police Barracks and at the fork in the road bear left on to Unquity Road.
5. New England Base Camp is approximately 1/2 mile on your left.

# MASSACHUSETTS NEW ENGLAND BASE CAMP

Just minutes from Boston, New England Base Camp is ready to welcome you to your next adventure!



- Restrooms
- Parking
- First Aid
- Seasonal Programs
- Ecology Trail

## LOCATION

411 Unquity Road, Milton, MA 02186  
(42.2343204679573, -71.091467130981)

NEBC@experiencebasecamp.org

[experiencebasecamp.org](http://experiencebasecamp.org)

Follow us on Facebook (@nebasecamp)

- Welcome Desk / Information
- Scouting Heritage Display
- Swimming
- S.T.E.M.
- Music Room
- Technology Center
- Game Design
- Global Citizenship
- Store
- Pollinator Garden

