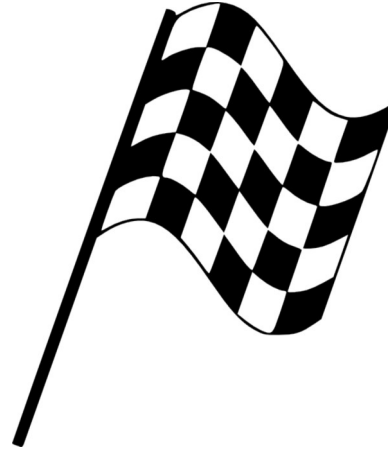




PIT CREW



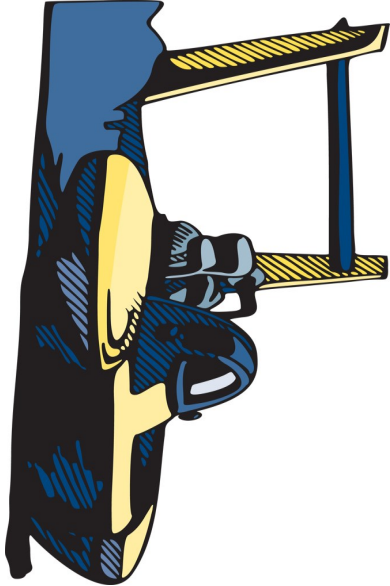
TOUR DE FRANCE



CHECKERED FLAG



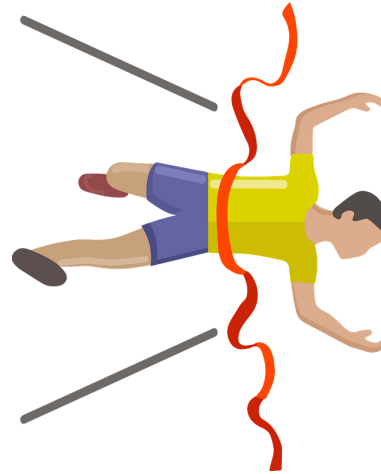
BATON



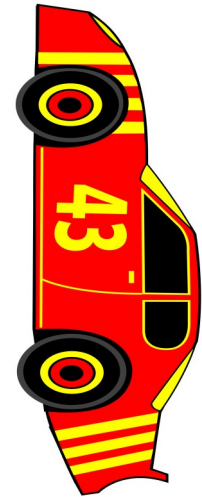
HYDROPLANE



JOCKEY



FINISH LINE



STOCK CAR

A baton is a stick-like object that is transferred/handed off from one runner to another during a relay race. Both runners must be running while transferring/handing off the baton.

The baton is 11.81 inches long and 1.49 inches in diameter. That is a little longer than a piece of paper.

BATON

Originally, stock cars were regular cars that had not been altered or re-configured from its original factory build.

Today, stock cars are made to handle the intense conditions of the track and provide the highest degree of safety to their drivers.

STOCK CAR

A checkered flag is a flag marked by alternating black and white squares that is waved at the finish line to signal the end of a race.

The first checkered flag was used in 1906 at the Glidden Tour auto races.

Today the checkered flag is as tied to auto racing as cars.

CHECKERED FLAG

The finish line is a line that marks the end of a race. The first to cross this line is the winner of the race.

In running the winner is the first person whose chest crossed the finish line.

In car races the first car to have its nose cross the finish line is the winner.

FINISH LINE

The Tour De France is the greatest bicycle race in the world.

The 1st Tour De France took place in 1903. It is 2,068 miles long, and takes 23 days to complete.

The leader at the end of each leg is given a yellow jersey to wear the next day.

TOUR DE FRANCE

A jockey is a person who races horses professionally.

They must be light, typically around a weight of 100-120 lb., and physically fit. They are light because their horse can only carry a certain amount of weight to avoid injury. Jockeys tend to be short due to the weight limits.

JOCKEY

The pit crew is very important to a race car driver. They are responsible for changing tires, refueling the car, telling the driver what is happening on the track, and making sure the car is running well.

A good pit crew can change all four tires in 12 seconds or less.

PIT CREW

A hydroplane (or *thunderboat*) is essentially a boat that flies. The design is such that very little of the hull (bottom) touches the water, and the boat mostly races on an air cushion.

They race at over 220 miles per hour. They are about 30 feet long, 14 feet wide and can weigh about 6,000 pounds.

HYDROPLANE