

SellWise User Group

Thursday, March 25th, 2021

Presenters

Will Atkinson, President – CAP/Sellwise

Don Day, Team Lead, Shared Services



User Group Topics

- Price Update Review
- New WorldPay Pinpad soon
- Pervasive 13 and Windows 10 Upgrades –
Now is the time
- Most common CAP Service calls
- Updates



Price Update Procedures

- BSA National Supply provides the price update file: ccprice.dat
- Get it from ScoutNET *Flash* page monthly
- Save to the C:\SW\Maintenance folder
- Open BSAImport.exe on your desktop or C:\Program Files\CAP
- Select the newest ccprice.dat file
- Accept and run the import



New Pinpad for SellWise

- The Verifone VX805 is officially End of Life
- We still have VX805s available.
- The replacement is the Verifone P400
- Supports ApplePay, EMV, etc.
- Available in April.



Windows 10 and Pervasive

- IT'S TIME! Please try to budget to upgrade
- If you already have Pervasive 13, you MUST deactivate the license on the old computer prior to installing on the new one
- A new install has a 30 day trial period
- When it expires, a DB-120 error will result, locking you out of SellWise
- CAP cannot unlock the license, you must call the vendor



Common CAP Service Calls

- Pervasive DB-120 error – license expiration
- Price Import
- Inventory Checker
- General Ledger questions – Get the manuals before adding/changing if you're not sure
- Configuration questions



Updates

- CAP Backup
- How to ask Questions of the presenters
- Inventory myth
- Where this presentation is located online



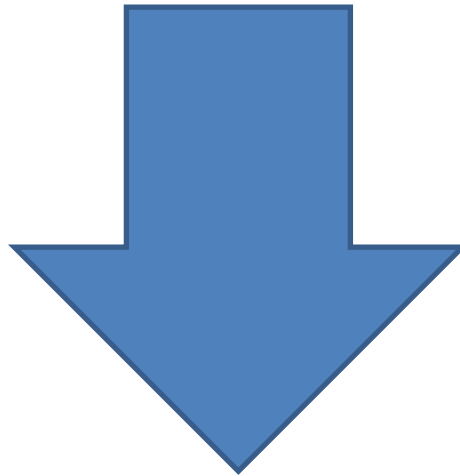
Backing up SellWise

- Is your data secure?
- New (added cost) service available (\$225/year)
- Scheduled backup daily, runs automatically
- Creates an encrypted file stored securely to the cloud
- Reviewed daily for success by CAP
- We contact you if your system fails to backup
- CAP will restore your system if you have a failure
- AVAILABLE NOW. Contact CAP for Pricing



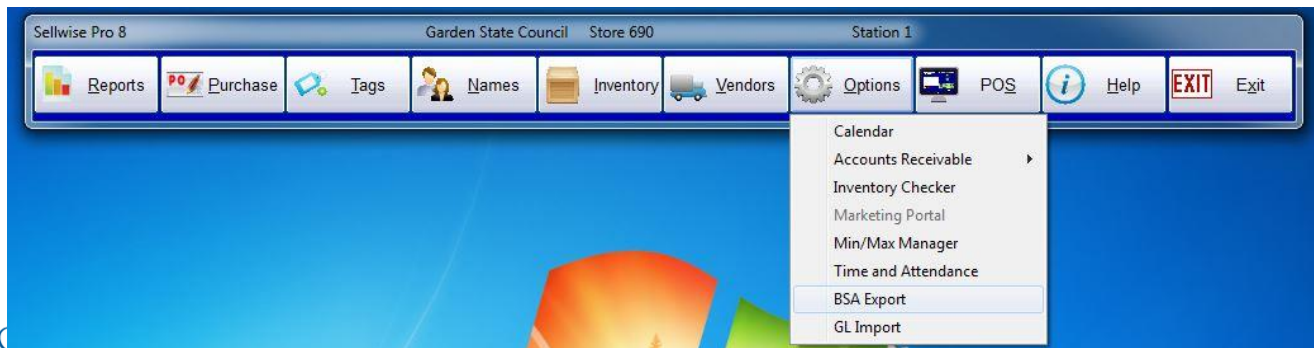
If you have questions:

1. Look for horizontal bars at bottom of your screen
2. Click on “chat”
3. Type in your question and hit enter to send to all participants



Common Myth: Inventory is once a year

- Truth – Inventory is a weekly process
- Check **five to ten** different items each week
 - Choose five to ten items and count total inventory on the shelf, in the back room, etc
 - Write the inventory counts on a piece of paper
 - Open Inventory Checker from ‘Options’ in SW



Slides and recording posted on scouting.org/financeimpact
Look on the *Council Administration* link, then look at the bottom for Sellwise Support/User Group link

Join Give Shop My.Scouting Login

Home > Council Support > Council Funding and Finance

Council Funding a

Funding a Council and assuring proper financial management Council Board. The material presented in this Section provides This is designed to be used by both Volunteers and Council

[Financial Planning](#)

[Funding the Council](#)

[Council Administration](#)

[Local Council Financial Audits](#)

[Back Office Business Solutions](#)

[BSA-COVID-19 Financial Resources](#)

Council Support

Council Management Support

Contact Council Management Support

Council Assessments

Council Board Resources

Council Business Practices

Council Fiscal Management and Training

Journey to Excellence

Council Funding and Finance

Financial Planning

Funding The Council

Council Administration



QUESTIONS!

Next Meeting

Thursday, April 22nd

2:00 pm CST

